

# Pompe ad ingranaggi Gruppo 4

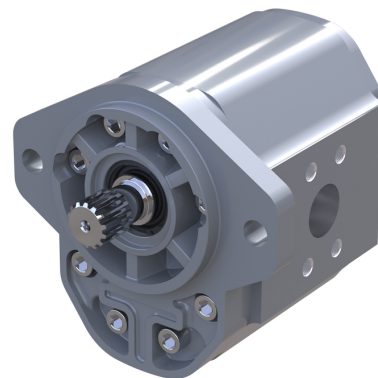


## Informazioni Generale

Il Gruppo 4 Danfoss è una gamma di pompe a ingranaggi a cilindrata fissa ad alte prestazioni. Costruiti con un corpo in estruso di alluminio ad alta resistenza con coperchio e flangia in alluminio, tutte le pompe sono bilanciate per un'efficienza eccezionale.

## Caratteristiche Principali Gruppo 4

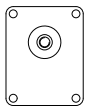
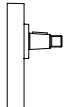
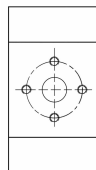
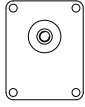
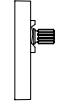
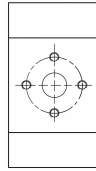
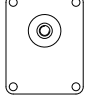
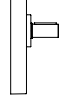
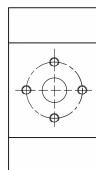
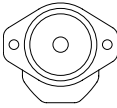
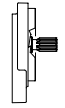
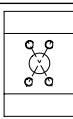
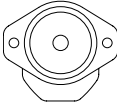
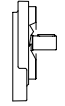
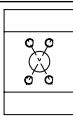
- Ampia gamma di cilindrata da 60 a 200 cm<sup>3</sup> / giro [da 3,66 a 12,2 pollici<sup>3</sup> / giro]
- Pressione continua fino a 220 bar [3191 psi]
- Velocità fino a 3000 min<sup>-1</sup> (rpm)
- Flange di montaggio standard SAE ed europee
- Ingranaggi in acciaio cementato di alta qualità
- Configurazioni multiple della pompa in combinazione con altre cilindrata dei gruppi SNP1NN, SNP2NN e SNP3NN



## Caratteristiche Tecniche TAP4NN

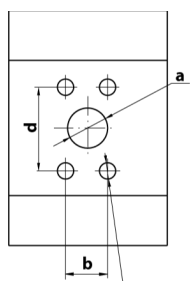
TAP4NN pump model		Frame size						
		60	85	106	130	148	180	200
<b>Displacement</b>	cm <sup>3</sup> /rev [in <sup>3</sup> /rev]	58.0 [3.54]	83.3 [5.08]	103.4 [6.31]	126.1 [7.69]	143.8 [8.77]	174.1 [10.62]	194.3 [11.86]
<b>Peak pressure</b>	bar [psi]	230 [3335]	230 [3335]	230 [3335]	230 [3335]	220 [3190]	180 [2610]	160 [2320]
<b>Rated pressure</b>		220 [3190]	220 [3190]	220 [3190]	220 [3190]	210 [3045]	170 [2465]	150 [2175]
<b>Minimum speed</b>	min <sup>-1</sup> (rpm)	650	650	600	550	500	500	480
<b>Maximum speed</b>		3000	3000	2500	2500'	2400	2400	2400

Configurazioni Alberi, Flange e porte

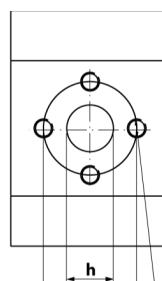
Motor	Code	Flange		Shaft		Port	
TAP4NN	01BA	pilot Ø 63.5 mm [2.5 in] European 01, 4- bolt		1:8 tapered		European flanged port + pattern	
TAP4NN	01DA	pilot Ø 63.5 mm [2.5 in] European 01, 4- bolt		Spline DIN 5482 B35x31xL44		European flanged port + pattern	
TAP4NN	01FA	pilot Ø 63.5 mm [2.5 in] European 01, 4- bolt		Parallel Ø30-Key 8x7xL50		European flanged port + pattern	
TAP4NN	02RA	pilot Ø 127 mm [5.0 in] SAE C, 2- bolt		Splined-SAE J498-14T		Vertical four bolt flanged port	
TAP4NN	02GA	pilot Ø 127 mm [5.0 in] SAE C, 2- bolt		Parallel Ø31,75- Key 7,962x7x36		Vertical four bolt flanged port	

Attacchi

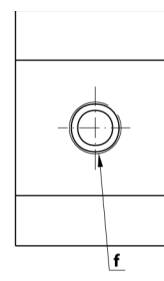
<b>F7</b>	1-1/4 GAS	Threaded GAS (BSPP)
<b>F8</b>	1-1/2 GAS	
<b>F9</b>	1-3/4 GAS	
<b>GE</b>	32x62x7/16-14UNC	Flanged port with the holes in + pattern UN thread
<b>GF</b>	38x72,5x1/2-13UNC	
<b>GK</b>	48x72,5x1/2-13UNC	



**c** (4 holes min. full thd.  
20 [0.787] deep)



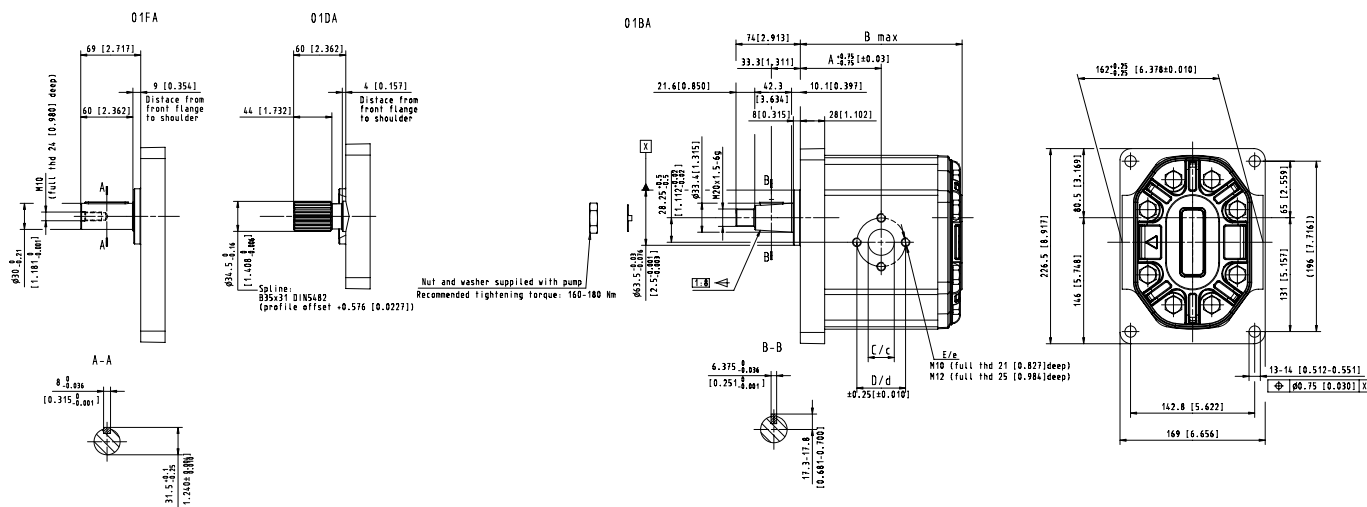
**i** (4 holes min. full thd.  
12 [0.472] deep)



Dimensioni

TAP4NN - 01FA, 01DA, and 01BA

mm  
[in]



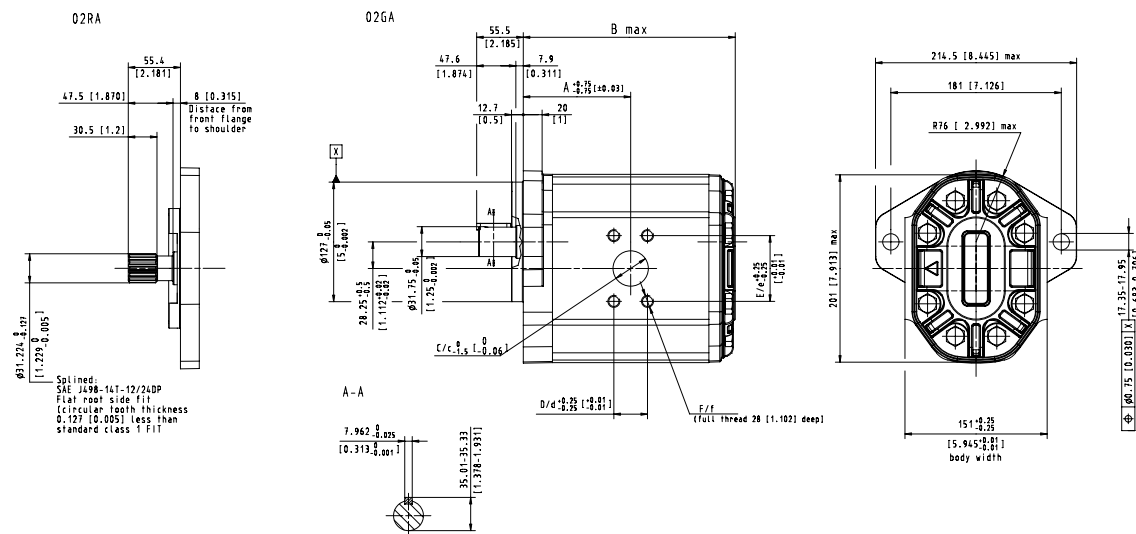
TAP4NN – 01FA, 01DA, 01BA dimensioni

Frame size		060	085	106	130	148	180	200
Dimension	A	84 [3.3]	89 [3.5]	93 [3.66]	97.5 [3.84]	101 [3.98]	107 [4.21]	111 [4.37]
	B	168 [6.61]	178 [7.0]	186 [7.32]	195 [7.68]	202 [7.95]	214 [8.42]	222 [8.74]
Inlet	C	36 [1.42]			45 [1.77]		56 [2.2]	
	D	62 [2.44]			72.5 [2.85]		92 [3.62]	
	E	M10			M12		M12	
Outlet	c	30 [1.18]			36 [1.42]		45 [1.77]	
	d	56 [2.2]			62 [2.44]		72.5 [2.85]	
	e	M10			M10		M12	

Dimensioni

TAP4NN - 02RA, and 02GA

mm  
[in]



TAP4NN – 02RA, 02GA dimensioni

Frame size		060	085	106	130	148	180	200
Dimension	A	87 [3.42]	92 [3.62]	96 [3.78]	100.5 [3.96]	104 [4.1]	110 [4.33]	114 [4.49]
	B	171 [6.73]	181 [7.13]	189 [7.44]	198 [7.79]	205 [8.07]	217 [8.54]	225 [8.86]
Inlet	C	38.1 [1.5]		50.8 [2.0]				
	D	35.71 [1.4]		42.88 [1.69]				
	E	69.85 [2.75]		77.77 [3.06]				
	F	1/2-13UNC		1/2-13UNC				
Outlet	c	31.8 [1.25]		38.1 [1.5]				
	d	30.18 [1.19]		35.71 [1.4]				
	e	58.72 [2.31]		69.85 [2.75]				
	f	7/16-14UNC		1/2-13UNC				

Servizi della SAMER

- Progettazione sistemi con pompe e motori in alluminio
- Vendita pompe e motori ad ingranaggi in impianti in circuito aperto
- Installazione e collaudo pompe e motori in circuito aperto
- Dimensionamenti oleodinamici in nuovi impianti e revamping impianti esistenti