

Pompe Ingranaggi Serie Gruppo 0 - Gruppo 1



Informazioni Generali

Danfoss Group 0 e Group 1 è una gamma di pompe a ingranaggi a cilindrata fissa con prestazioni di picco. Costruiti con un corpo in alluminio estruso ad alta resistenza con coperchio e flangia in alluminio, tutte le pompe sono bilanciate per un'eccezionale efficienza. La flessibilità della gamma, combinata con alta efficienza e bassa rumorosità, rende le pompe di questa serie ideali per una vasta gamma di applicazioni.

Caratteristiche e vantaggi Gruppo 1

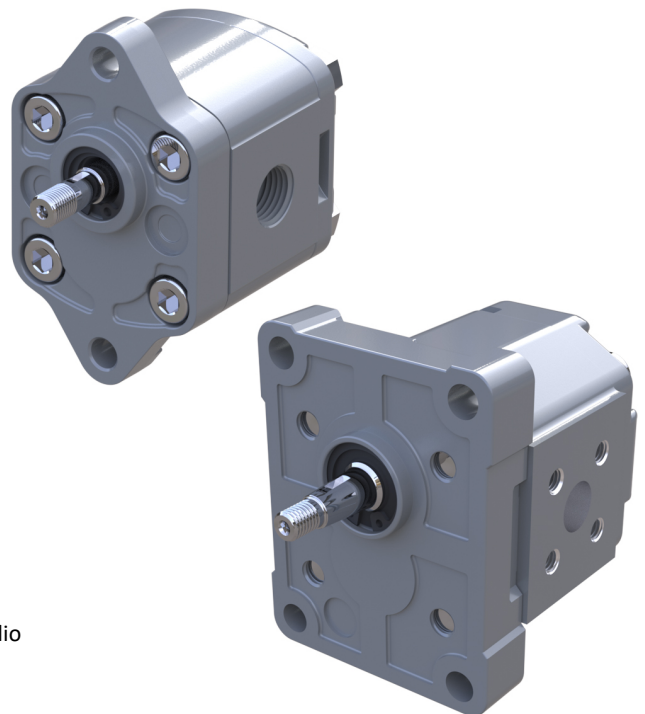
Attributi della pompa ad ingranaggi:

- Fino a 16 cilindrata da 0,25 a 12 cm³ / giro [da 0,015 a 0,732 in³ / giro)
- Classificazione di pressione continua fino a 250 bar [3625 psi]
- Velocità fino a 4000 min⁻¹ (rpm)
- Flange e alberi di montaggio SAE, ISO e DIN
- Funzionamento compatto, leggero, silenzioso
- Le unità del gruppo 1 sono disponibili come motori unidirezionali e bidirezionali, anche con valvola di sicurezza integrata
- È possibile combinare i gruppi 1, 2 e 3 per creare una pompa multi-stadio

Caratteristiche e vantaggi Gruppo 0

Le caratteristiche speciali delle pompe del Gruppo 0 includono:

- Ampia gamma di cilindrata da 0,25 a 1,3 cm³/giro (da 0.015 a 0,075 in³/giro)
- Classificazione di pressione continua fino a 200 bar [2900 psi]
- Flangia di montaggio standard (europea, 2 bullon
- Velocità fino a 8000 min⁻¹ (rpm)
- Funzionamento compatto, leggero, silenzioso
- Le unità del gruppo 1 sono disponibili come motori unidirezionali e bidirezionali, anche con valvola di sicurezza integrata
- È possibile combinare i gruppi 1, 2 e 3 per creare una pompa multi-stadio



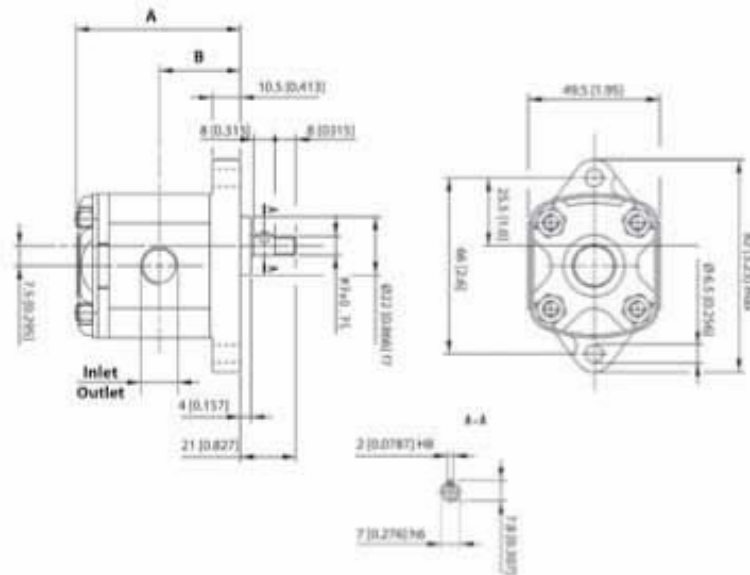
GRUPPO 0

INFORMAZIONI TECNICHE

		Frame size				
		,25	,45	,57	,76	1,3
Displacement	cm ³ /rev [in ³ /rev]	0.25 [0.015]	0.45 [0.027]	0.57 [0.034]	0.76 [0.045]	1.27 [0.075]
Peak pressure	bar [psi]	200 [2900]	200 [2900]	200 [2900]	200 [2900]	200 [2900]
Rated pressure		180 [2600]	180 [2600]	180 [2600]	180 [2600]	180 [2600]
Minimum pressure at maximum speed		103 [1500]	103 [1500]	103 [1500]	103 [1500]	103 [1500]
Minimum speed at 103 bar [1500 psi]	min ⁻¹ (rpm)	500	500	500	500	500
Maximum speed		8000	8000	8000	7000	5000

Dimensioni

TFP0NN-01FA



TFP0NN dimensions

Frame size		,25	,45	,57	,76	1,3
Dimension	A	53.5 [2.10]	55.0 [2.16]	56.0 [2.20]	61.5 [2.42]	61.5 [2.42]
	B	26.5 [1.04]	27.3 [1.07]	27.8 [1.09]	30.5 [1.20]	30.5 [1.20]
Inlet/Outlet		M10 x 1				

Model code examples and maximum shaft torque

Flange/drive gear	Model code example	Maximum shaft torque
01FA	TFP0NN/,57RN01FAP1D1D1NNNN/NNNNN	4.5 N·m [39.8 lb·in]

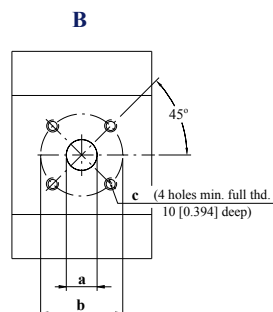
GRUPPO 1

INFORMAZIONI TECNICHE

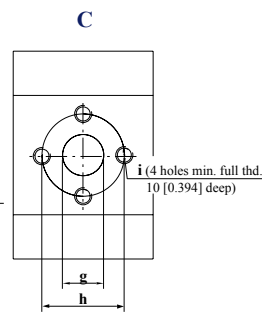
		Frame size										
		1,2	1,7	2,2	2,6	3,2	3,8	4,3	6,0	7,8	010	012
Displacement	cm ³ /rev	1.18	1.57	2.09	2.62	3.14	3.66	4.19	5.89	7.59	9.94	12.00
	ev [in ³ /rev]	[0.072]	[0.096]	[0.128]	[0.160]	[0.192]	[0.223]	[0.256]	[0.359]	[0.463]	[0.607]	[0.732]
SNP1NN												
Peak pressure	bar	270	270	270	270	270	270	270	210	170		
	[psi]	[3915]	[3915]	[3915]	[3915]	[3915]	[3915]	[3915]	[3045]	[2465]		
Rated pressure	[psi]	250	250	250	250	250	250	250	190	150		
		[3625]	[3625]	[3625]	[3625]	[3625]	[3625]	[3625]	[2760]	[2175]		
Minimum speed at 0-150 bar		800	800	600	600	600	600	500	500	500	-	-
Min. speed at 150 bar to rated pressure	min ⁻¹ (rpm)	1200	1200	1000	1000	1000	1000	800	800	800		
		4000	4000	4000	4000	4000	4000	3000	3000	3000		
Maximum speed		4000	4000	4000	4000	4000	4000	3000	3000	3000		
SKP1NN*												
Peak pressure	bar	270	270	270	270	270	270	270	250	220	170	140
	[psi]	[3915]	[3915]	[3915]	[3915]	[3915]	[3915]	[3915]	[3625]	[3190]	[2465]	[2030]
Rated pressure	[psi]	250	250	250	250	250	250	250	230	200	150	120
		[3625]	[3625]	[3625]	[3625]	[3625]	[3625]	[3625]	[3335]	[2900]	[2175]	[1740]
Minimum speed at 0-150 bar		800	800	800	800	800	800	600	600	600	600	600
Min. speed at 150 bar to rated pressure	min ⁻¹ (rpm)	1200	1200	1000	1000	1000	1000	1000	800	800	800	-
		4000	4000	4000	4000	4000	4000	3000	3000	3000	2000	2000
Maximum speed		4000	4000	4000	4000	4000	4000	3000	3000	3000	2000	2000

Configurazioni Attacchi

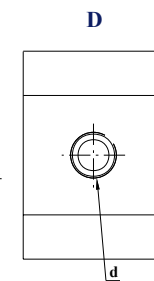
Attacchi con filettatura con fori a croce X



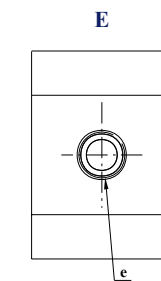
Attacchi con filettatura con fori a croce +



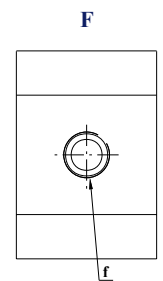
Filettato Metrico



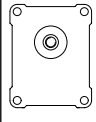
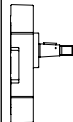
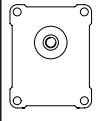
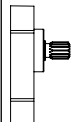
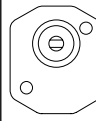
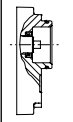
SAE filettato SAE



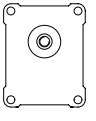
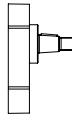
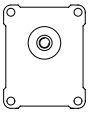
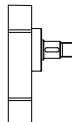
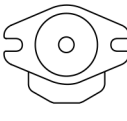
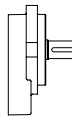
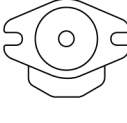
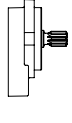
Filettato GAS



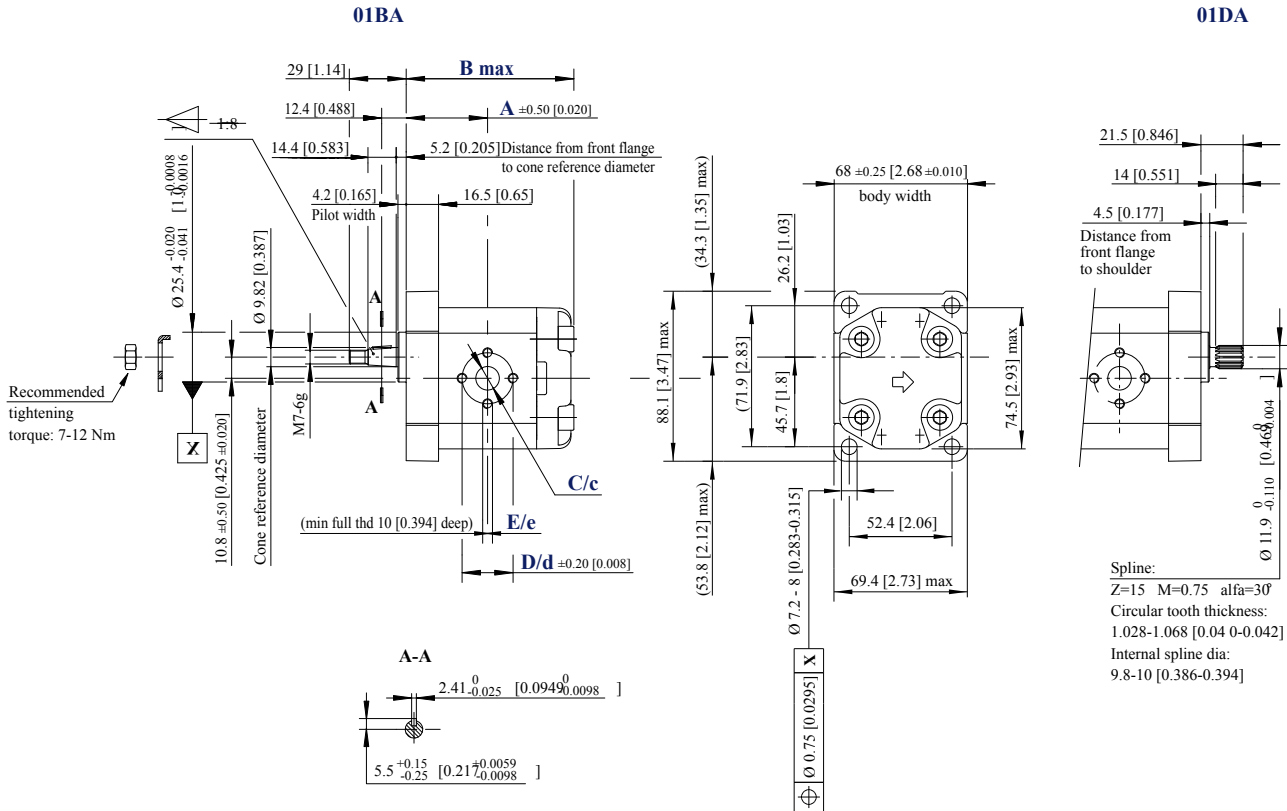
Configurazioni Flange, Alberi

Code	Flange		Shaft	
01BA	25.4 mm [1.0 in] pilot Ø European 4-bolt		1:8 tapered	
01DA	25.4 mm [1.0 in] pilot Ø European 4-bolt		15-teeth splined m = 0.75 a = 30o	
03CA	pilot Ø32 + O-ring + 2 holes through body		Danfoss tang	

Flange, Alberi configurazioni perr SKP1NN

Code	Flange		Shaft	
02BB	30 mm [1.181] pilot Ø European 4-bolt		1:8 tapered	
02FA	30 mm [1.181] pilot Ø European 4- bolt		12 mm [0.472 in] parallel	
06GA	SAE A-A 2-bolt		12.7 mm [0.5 in] parallel	
06SA	SAE A-A 2-bolt		9-teeth splined SAE spline J 498-9T-20/40DP	

SNP1NN - 01BA and 01DA



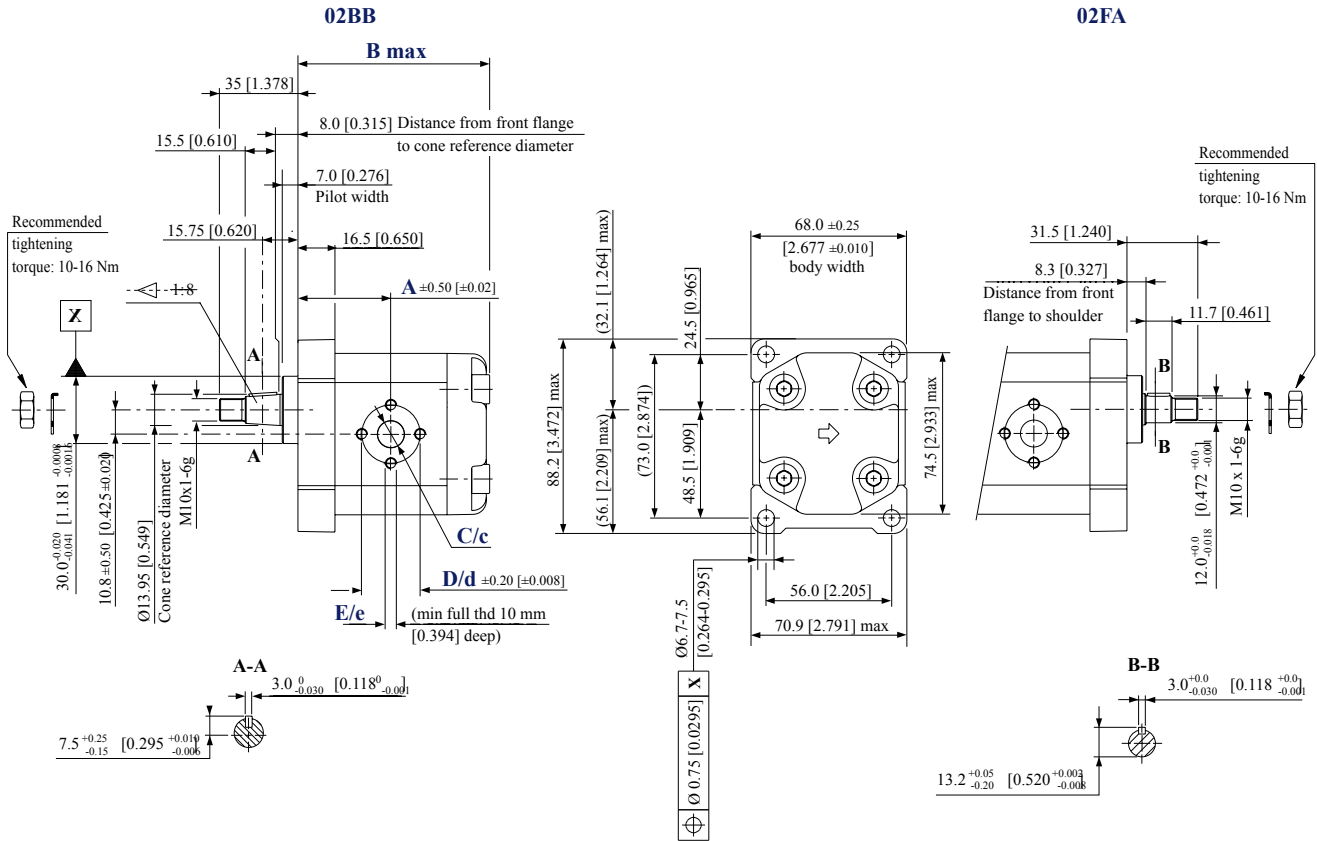
SNP1NN – 01BA and 01DA dimensioni

Frame size		1,2	1,7	2,2	2,6	3,2	3,8	4,3	6,0	7,8
Dimension	A	37.75 [1.486]	38.5 [1.516]	39.5 [1.555]	40.5 [1.634]	41.5 [1.634]	42.5 [1.673]	43.5 [1.713]	46.75 [1.841]	50.0 [1.969]
	B	79.5 [3.130]	81.0 [3.189]	83.0 [3.268]	85.0 [3.346]	87.0 [3.425]	89.0 [3.504]	91.0 [3.583]	97.5 [3.839]	104.0 [4.094]
Inlet/Outlet	C/c	12 [0.472]								
	D/d	26 [1.024]								
	E/e	M5								

Esempi di codice modello e coppia massima dell'albero

Flange/drive gear	Model code example	Maximum shaft torque
01BA	SNP1NN/3,8RN01BAP1C2C2NNNN/NNNNN	25 N•m [221 lb•in]
01DA	SNP1NN/6,0LN01DAP1C2C2NNNN/NNNNN	35 N•m [310 lb•in]

SKP1NN – 02BB and 02FA



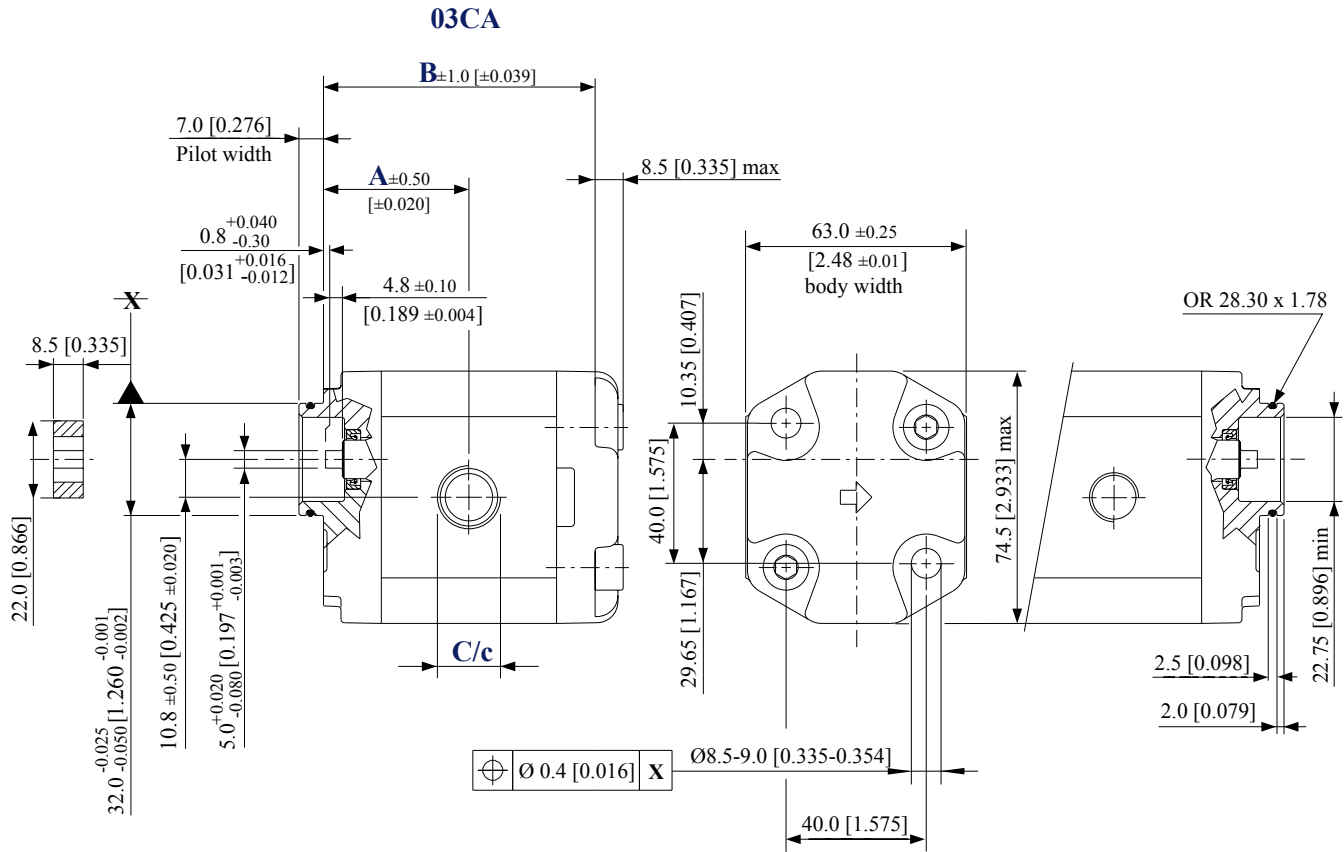
SKP1NN – 02BB and 02FA dimensioni

Frame size		1,2	1,7	2,2	2,6	3,2	3,8	4,3	6,0	7,8	010	012
Dimension	A	37.75 [1.486]	38.5 [1.516]	39.5 [1.555]	40.5 [1.634]	41.5 [1.634]	42.5 [1.673]	43.5 [1.713]	46.75 [1.841]	50.0 [1.969]	54.5 [2.146]	58.5 [2.303]
	B	79.5 [3.130]	81.0 [3.189]	83.0 [3.268]	85.0 [3.346]	87.0 [3.425]	89.0 [3.504]	91.0 [3.583]	97.5 [3.839]	104.0 [4.094]	113.0 [4.449]	121.0 [4.764]
Inlet/Outlet	C/c	12 [0.472]										
	D/d	26 [1.024]										
	E/e	M5										

Esempi di codice modello e coppia massima dell'albero

Flange/drive gear	Model code example	Maximum shaft torque
02BB	SKP1NN/6,0RNO2BBP1C2C2NNNN/NNNNN	50 N·m [442 lb·in]
02FA	SKP1NN/2,2LN02FAP1C2C2NNNN/NNNNN	24 N·m [212 lb·in]

SNP1NN – 03CA



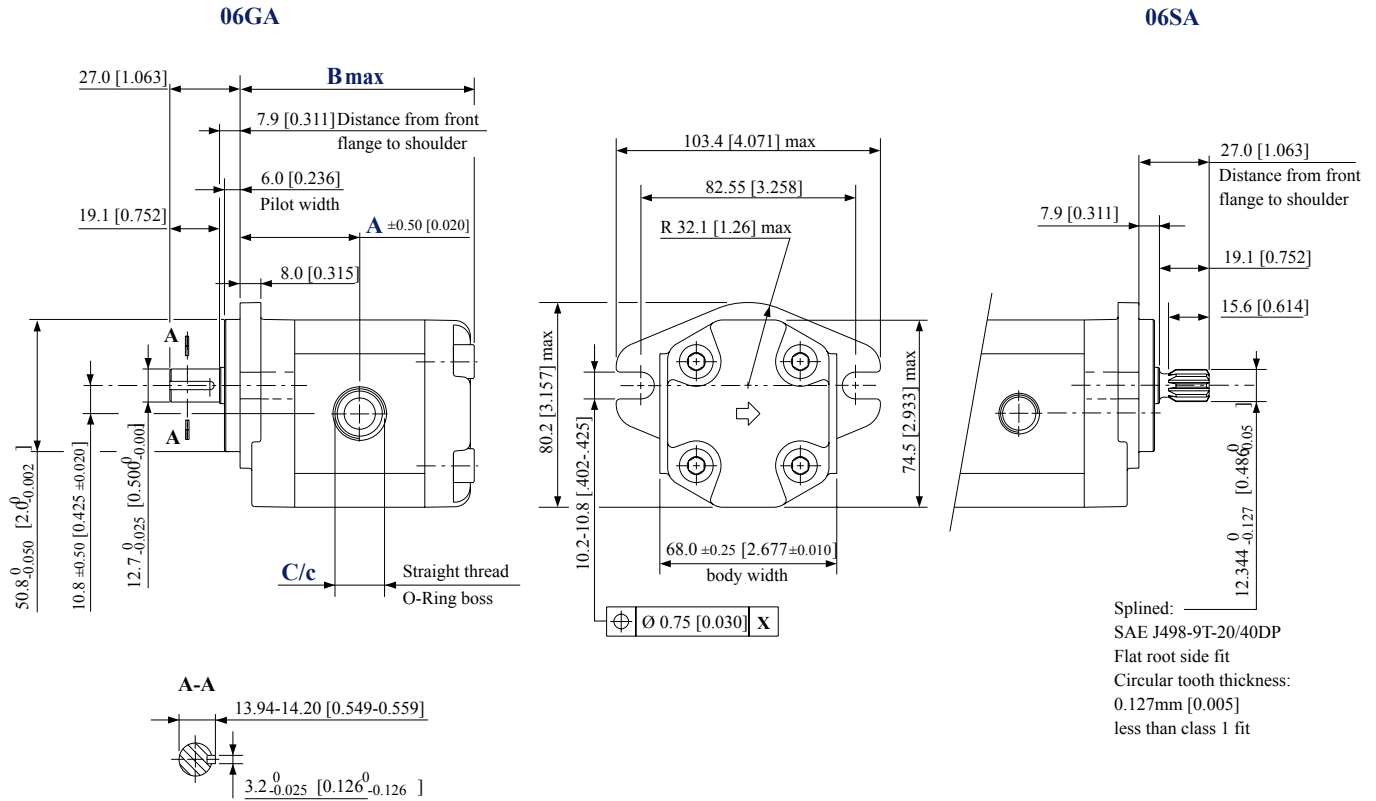
SNP1NN – 03CA dimensioni

Frame size	1,2	1,7	2,2	2,6	3,2	3,8	4,3	6,0	7,8	
Dimension	A	37.75 [1.486]	38.5 [1.516]	39.5 [1.555]	40.5 [1.634]	41.5 [1.634]	42.5 [1.673]	43.5 [1.713]	46.75 [1.841]	50 [1.969]
	B	70 [2.756]	71.5 [2.815]	73.5 [2.894]	75.5 [2.972]	77.5 [3.051]	79.5 [3.130]	81.5 [3.209]	88.0 [3.465]	94.5 [3.720]
Inlet	C	M18 x 1.5 THD 12 [0.472] deep								
Outlet	c	M14 x 1.5, THD 12 [0.472] deep					M18 x 1.5, THD 12 [0.472] deep			

Esempi di codice modello e coppia massima dell'albero

Flange/drive gear	Model code example	Maximum shaft torque
03CA	SNP1NN/1,7RN03CA03D5D3NNNN/NNNN	14 N·m [124 lb·in]

SKP1NN – 06GA and 06SA



SKP1NN – 06GA and 06SA dimensioni

Frame size	1,2	1,7	2,2	2,6	3,2	3,8	4,3	6,0	7,8	010	012	
Dimension	A	42.25 [1.663]	43 [1.693]	44 [1.732]	45.0 [1.772]	46.0 [1.811]	47 [1.850]	48 [1.890]	51.25 [2.018]	54.5 [2.146]	59 [2.323]	63.5 [2.50]
	B	84 [3.307]	85.5 [3.366]	87.5 [3.445]	89.5 [3.524]	91.5 [3.602]	93.5 [3.681]	95.5 [3.760]	102 [4.016]	108.5 [4.272]	117.5 [4.626]	125.5 [4.941]
Inlet	C	¾-16UNF-2B, THD 14.3 [0.563] deep										
Outlet	c	9/16-18UNF-2B, THD 12.7 [0.500] deep										

Flange/drive gear	Model code example	Maximum shaft torque
06GA	SKP1NN/3,2RN06GAP1E4E3NNNN/NNNNN	32 N·m [283 lb·in]
06SA	SKP1NN/012LN06SAP1E4E3NNNN/NNNNN	34 N·m [301 lb·in]

Servizi della SAMER

- Progettazione sistemi con pompe e motori in alluminio
- Vendita pompe e motori ad ingranaggi in impianti in circuito aperto
- Installazione e collaudo pompe e motori in circuito aperto
- Dimensionamenti oleodinamici in nuovi impianti e revamping impianti esistenti

SAMER S.r.l. C.da Molino 58/C - Campofilone FM - 63828

Tel: +39 0734 340364 - 06 30818297 - Cell.+39 348 6937145

info@samer.company - www.samer.company