

# Variable hydraulic motors

## SERIES MCV / MKV



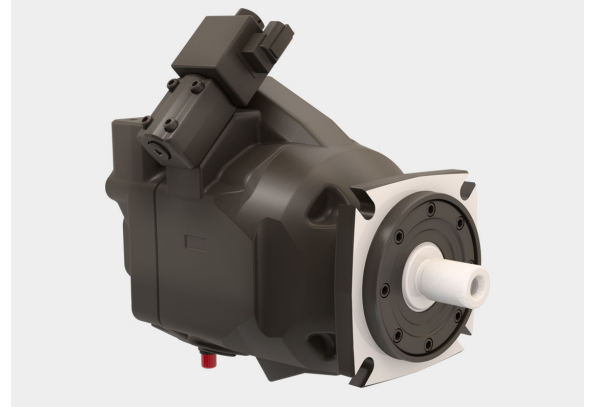
### Description

PMH MCV / MKV are high pressure axial piston variable displacement motors for closed loop specifically designed to be used on heavy duty machines for traction and auxiliary functions, providing efficiency and durability.

### WIDE RANGE OF CONTROLS

- PMH MCV are flanged type motors
- PMH MKV are plug-in type hydraulic motor

The geometry of the components is optimized to reduce wear and provide the most efficient oil flow. Similarly the global structure of the motor is designed to handle extreme pressure and loads: this way efficiency is also maintained in high pressure working conditions.



### Product range and technical data

PMH		MCV / MKV 55	MCV / MKV 90	MCV / MKV 110	MCV / MKV 180
Displacement	cc/rev	55	90	110	180
Max output speed	rpm	4.300	4.000	3.800	2.900
Max pressure	bar	500	500	500	500
Max output torque	nm	350	570	700	1121
Weight	Kg	25	36	36	75

### SAMER services

- Design of systems with pumps and motors in closed and open circuits
- Sale of pumps and motors in closed and open circuits
- Installation and testing of pumps and motors in closed and open circuits
- Repair of pumps and motors in closed circuit and open circuit

### SAMER S.r.l.

C.da Molino 58/C - Campofilone FM - 63828

Tel: +39 0734 340364 - 06 30818297 - Cell.+39 348 6937145

info@samer.company - www.samer.company